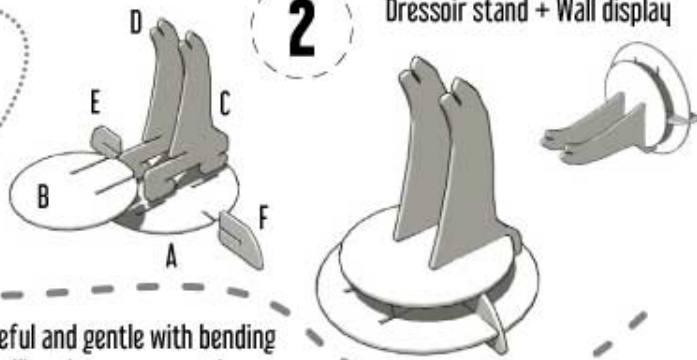


Clean hands in this stage will be very convenient for a nice final result :-)

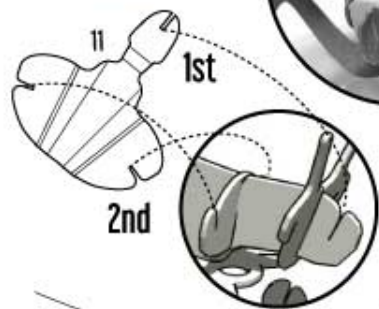
2

Dressoir stand + Wall display

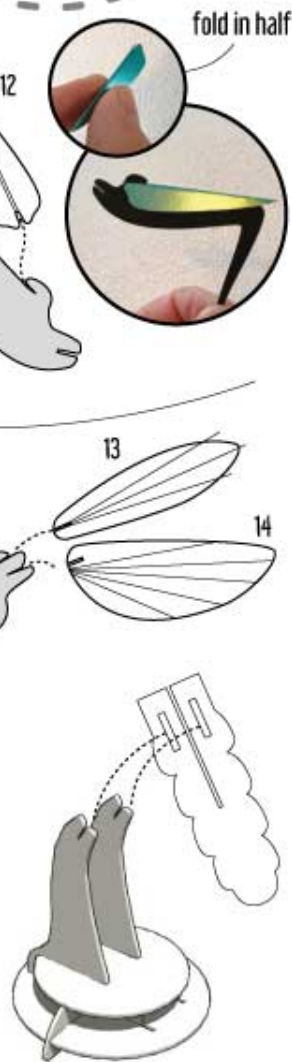
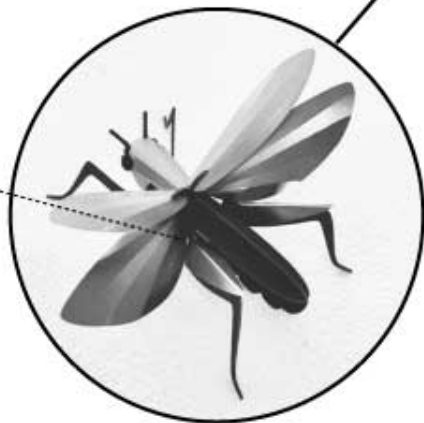


3

please be careful and gentle with bending and installing the paper parts!



Bend the wings a little bit downwards to lock the wing behind this part of the back legs.



Nr. 23



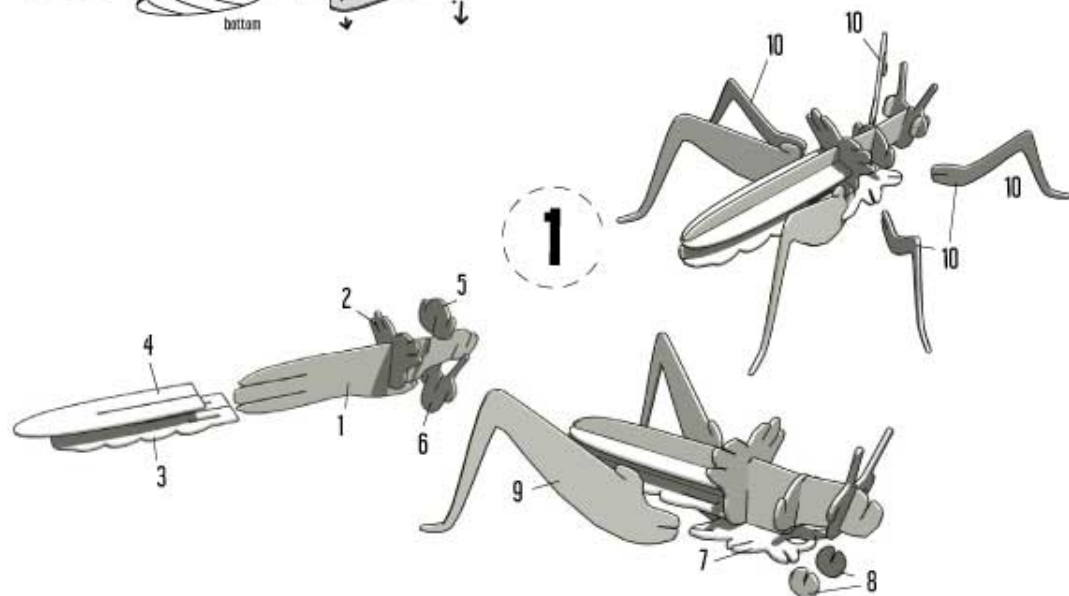
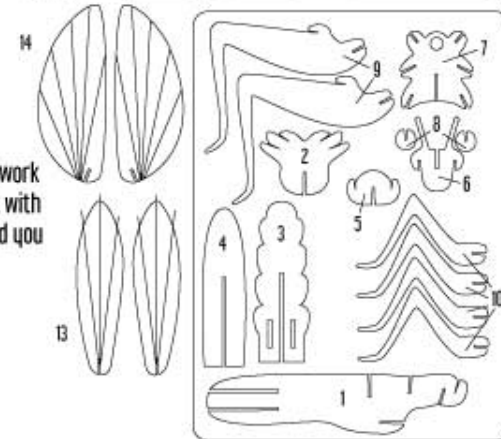
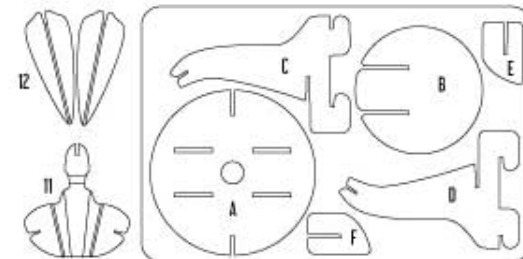
Insects

Grasshopper

Instruction sheet Read first!

Important! The cardboard and paper parts are fragile so please work carefully, don't squeeze or force the parts for best result. Start with building the cardboard skeleton frames. The illustrations will lead you through the process.

Note for the metallic paper parts: When removed, bend them only a little bit to curl the part lightly to reach the desired effect.



Others in the collection:

